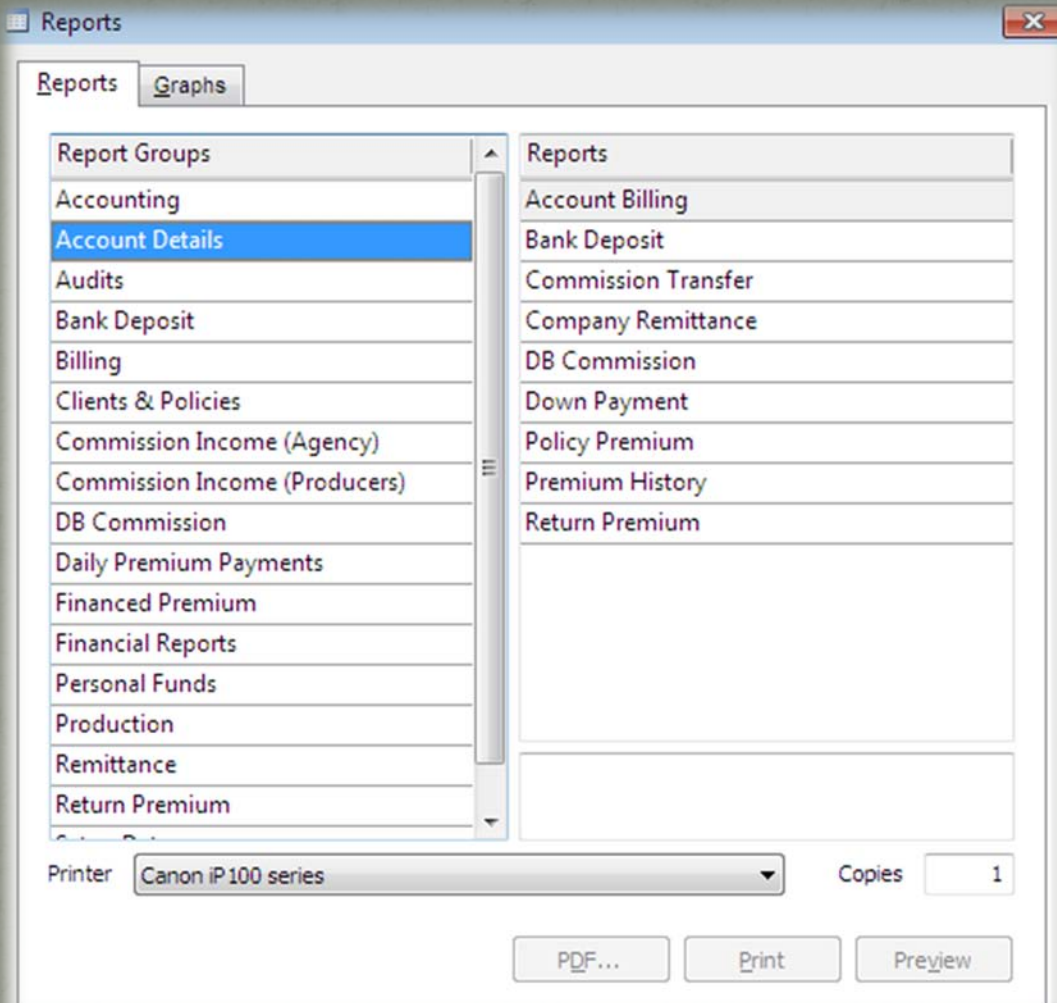


**INSURANCE TRUST ACCOUNT
TECHNOLOGY™
NOBL™
REPORTING SYSTEM**

**Developed by Paulmar Group, LLC
Copyright 2008 – 2012**

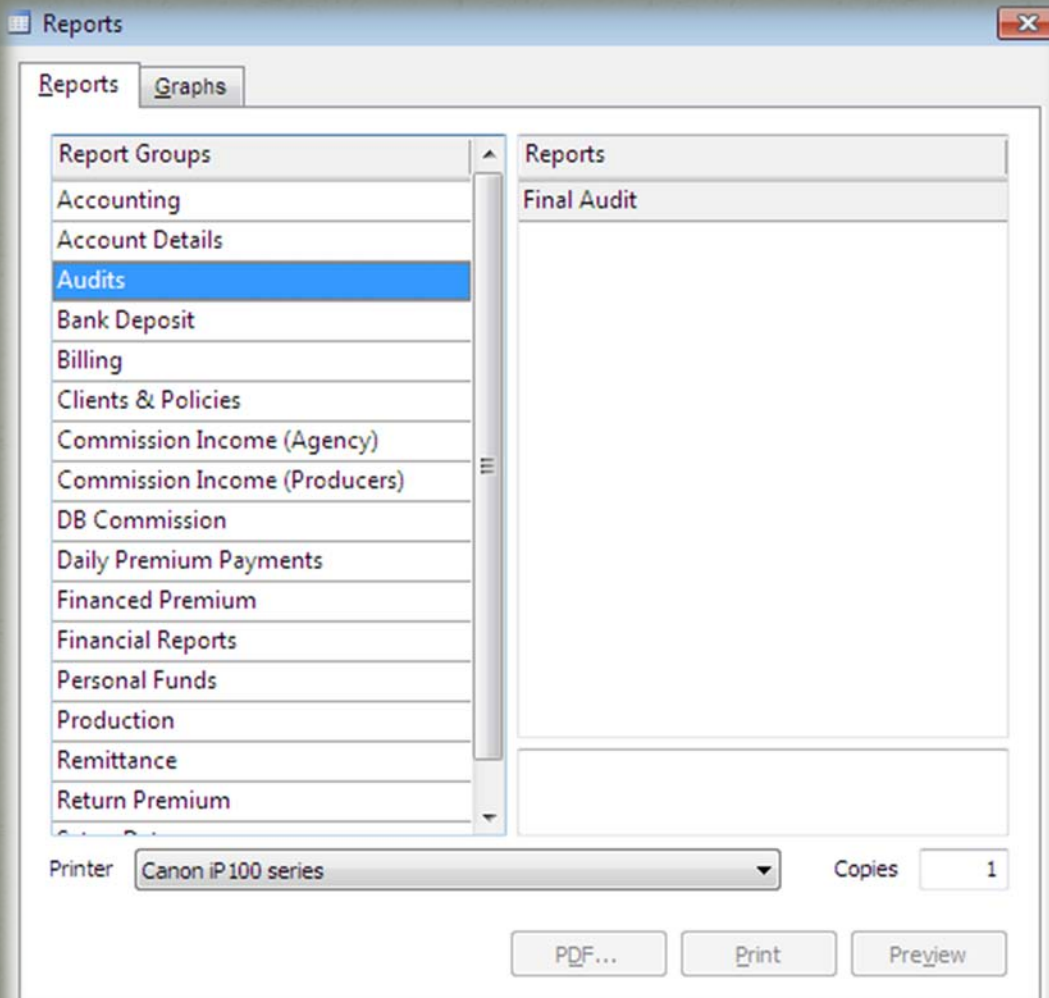
Reporting Policy Details



NOBL Reporting System is Organized by Groups . The “Account Details” Group Provides Detailed Data for Each Policy.

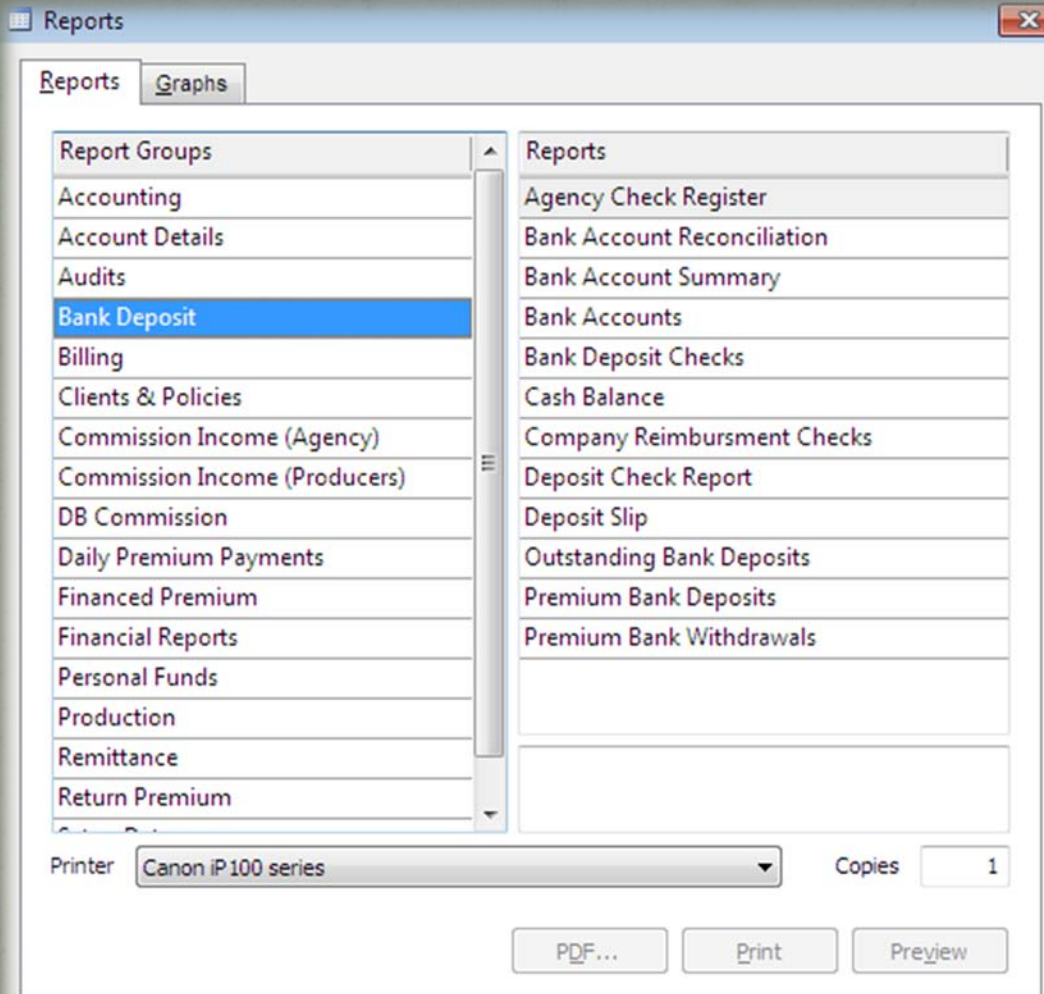
Tracking Invoices, Payments, Bank Deposits, Agency Commission, Company Remittance , DB Commission & Return Premium, Policy by Policy

Reporting Premium Audits



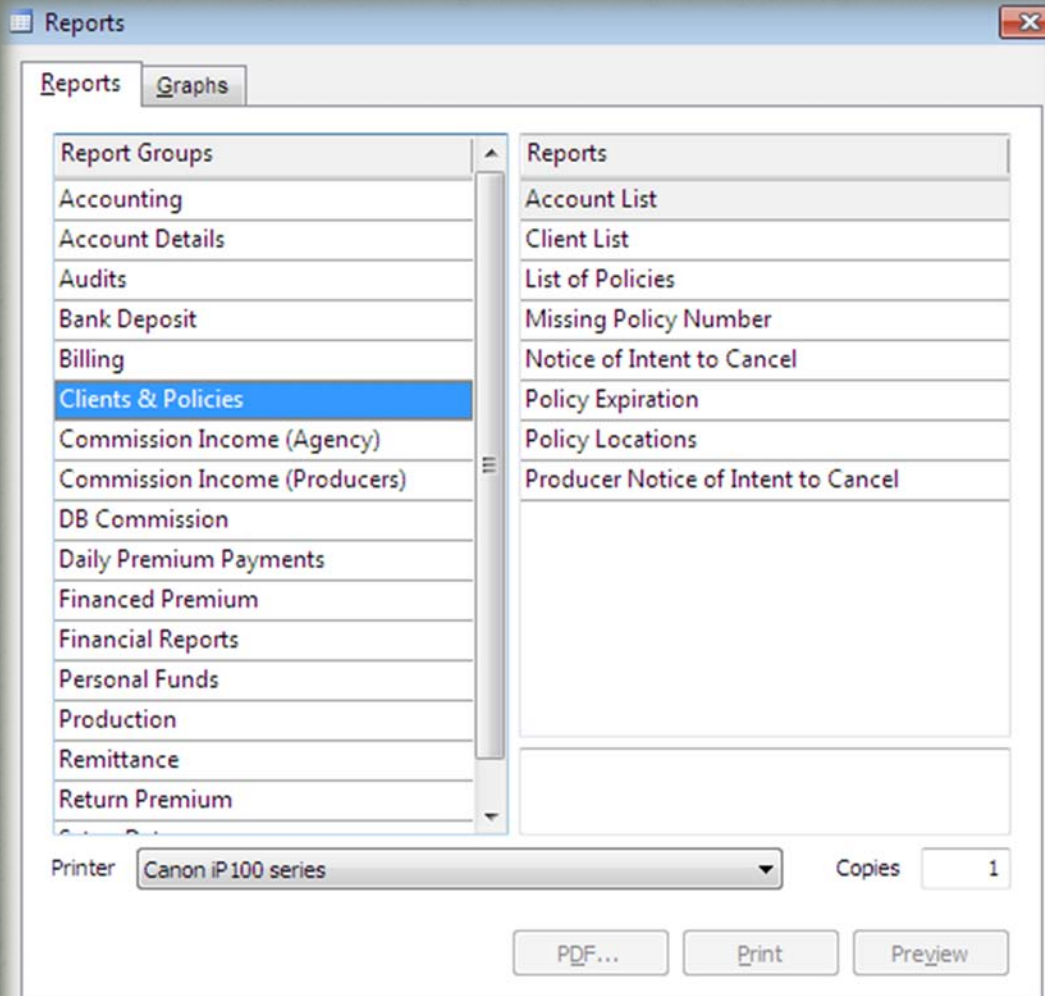
Tracking &
Reporting Final
Audits, Policy by
Policy

Reporting Bank Deposits



Reporting Trust Bank Account Data: Cash Balance, Cash Register, Deposits & Withdrawals, Bank Deposit Slips, Bank Account Summary (All Bank Accounts), Copies of Bank Deposit Slips

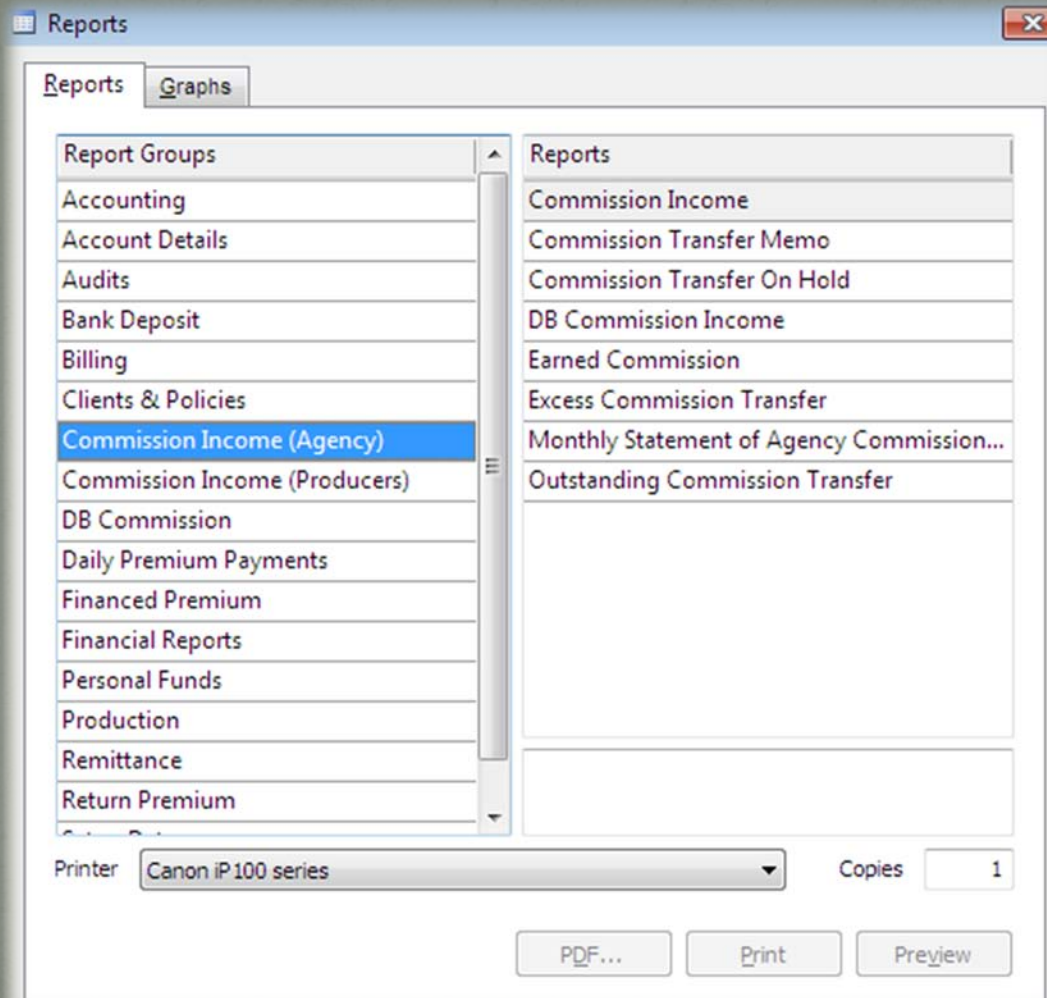
Reporting Clients and Policies



Providing Lists of Clients & Policies, Missing Policy Numbers, Policy Expiration Reports, Cancellation Notices Due to Non-Payment of Premium.

Both Single and Multiple Locations Policies

Reporting Agency Commission

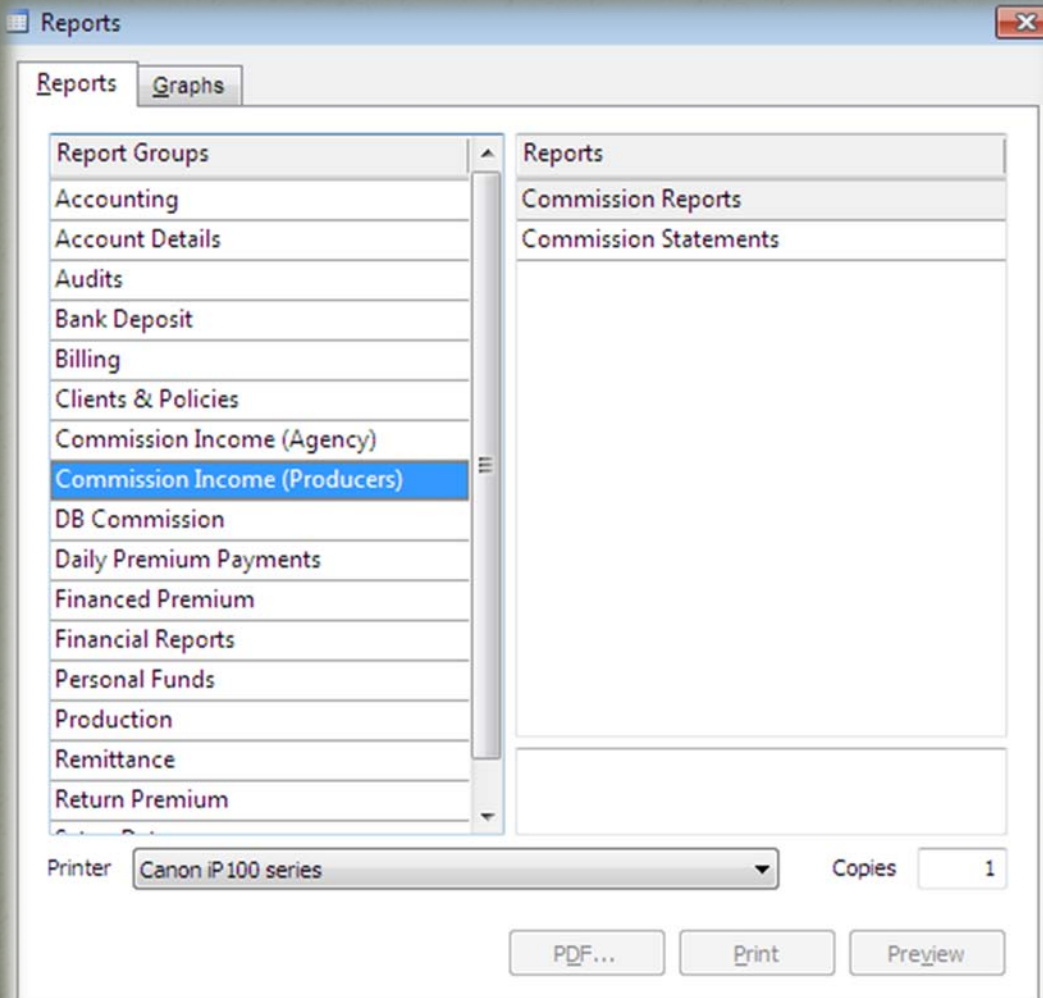


Tracking Agency
Commission Income
Based on Premium
Receipts (Payments);
Commission Transfer
Memos;

Reporting
Commissions “On
Hold”, Commission
Receivable, Earned or
Lost & Commissions
Transferred to
Operating Account;

Agency Commission
Reports for Any Time
Period

Reporting Producer Commission

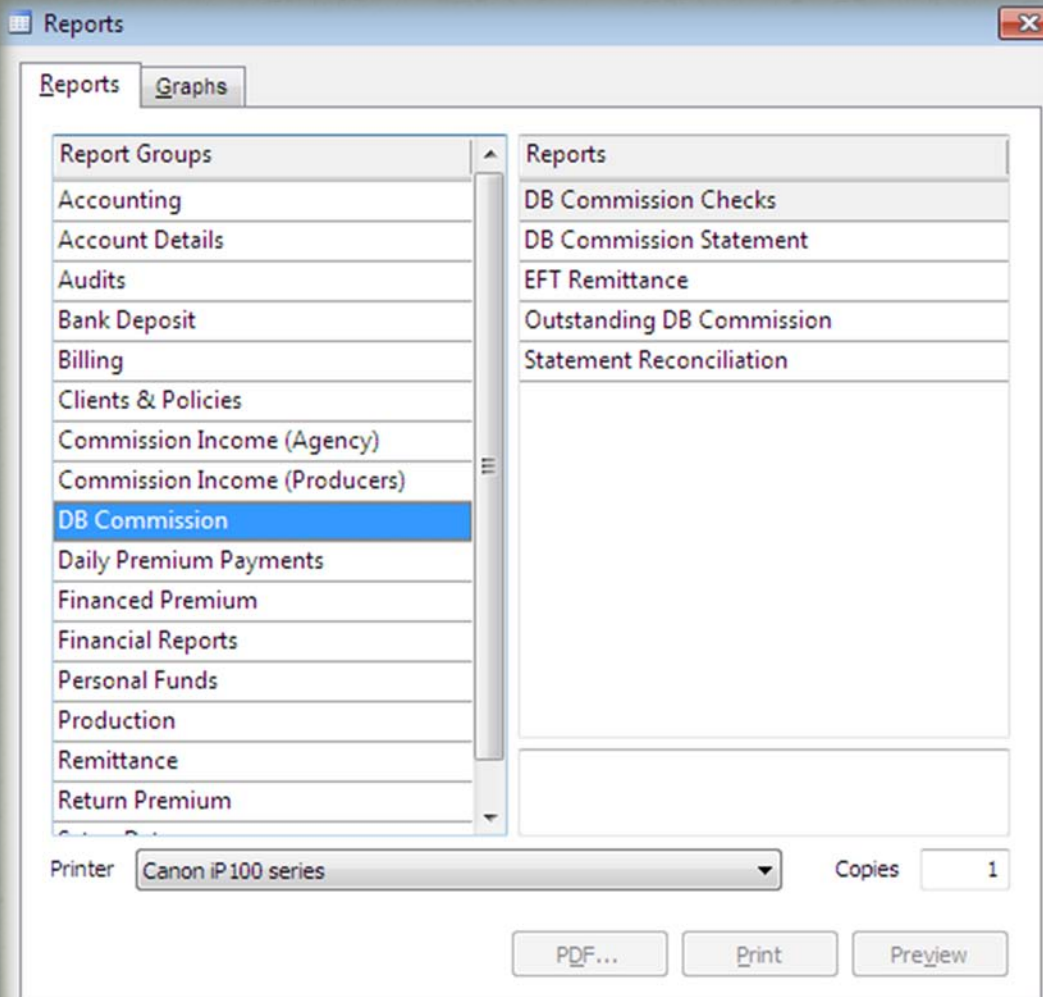


Determining and Reporting Producer Commission Income, Policy by Policy, Any Time Period;

Commission Statements Include All Producers;

Commission Reports Summarize Commission Data of One Producer;

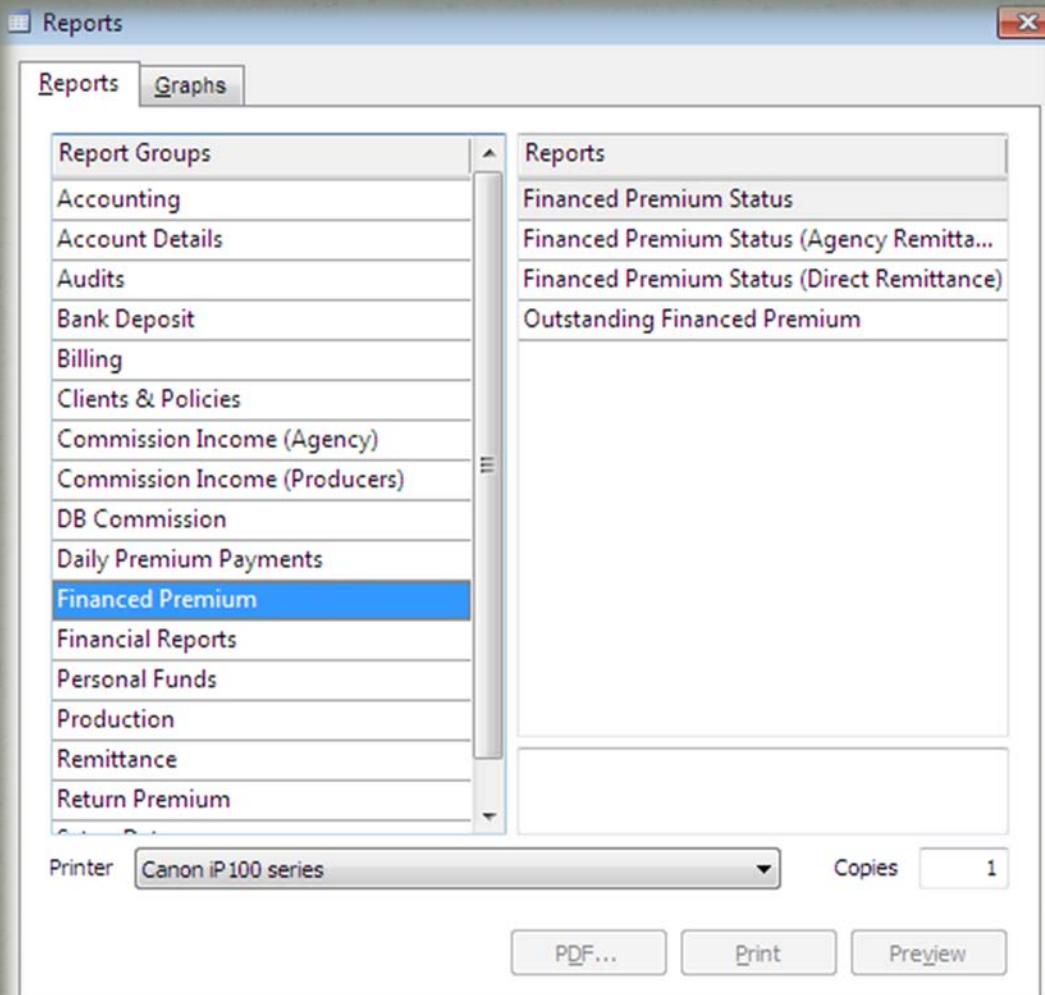
Reporting DB Commission



Retrieving Copies of
Past DB Commission
Statements and DB
Commission Checks;

Reporting
Outstanding DB
Commissions

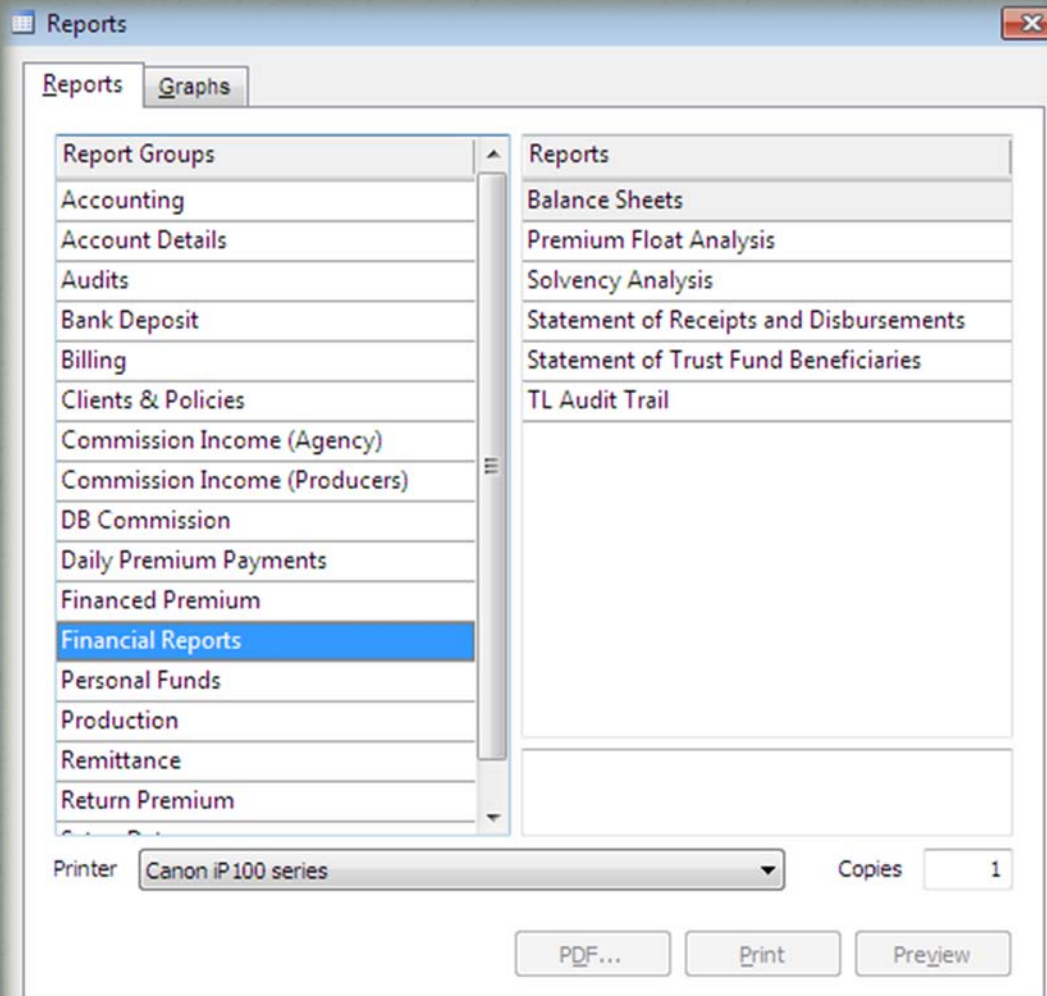
Reporting Financed Premiums



**Reporting Status of
Financed Premiums,
Policy by Policy, Both
Remitted Directly to
Carriers or Due to the
Agency;**

**Outstanding
Financed Premiums
Reported**

Reporting Financial Solvency

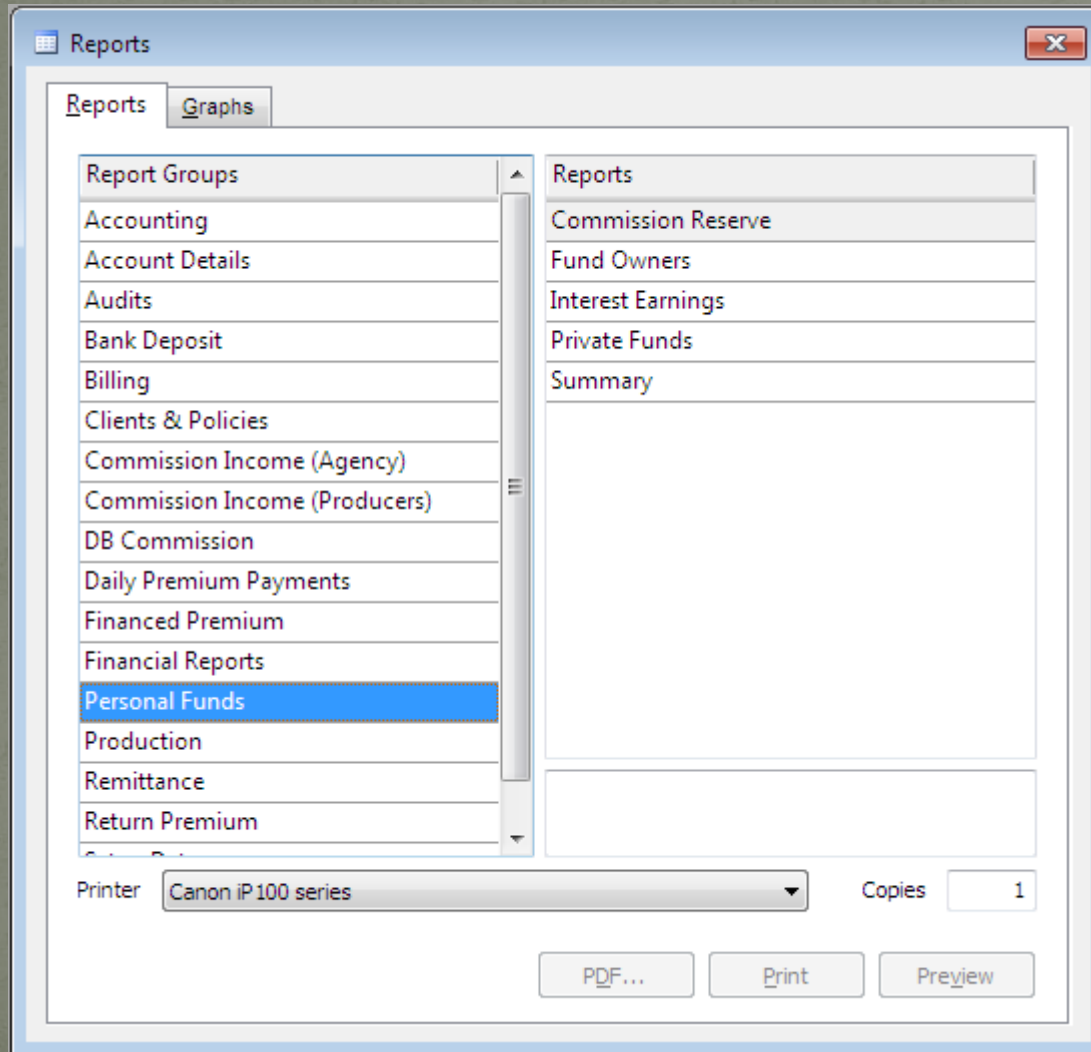


Main Financial Reports of Insurance Trust Account: Balance Sheet & Stmt of Receipts & Disbursements (aka Float Statement);

Solvency Analysis Reports Use Balance Sheet Data;

Statement of Trust Funds Beneficiaries Based on Premium Float Analysis (Policy by Policy)

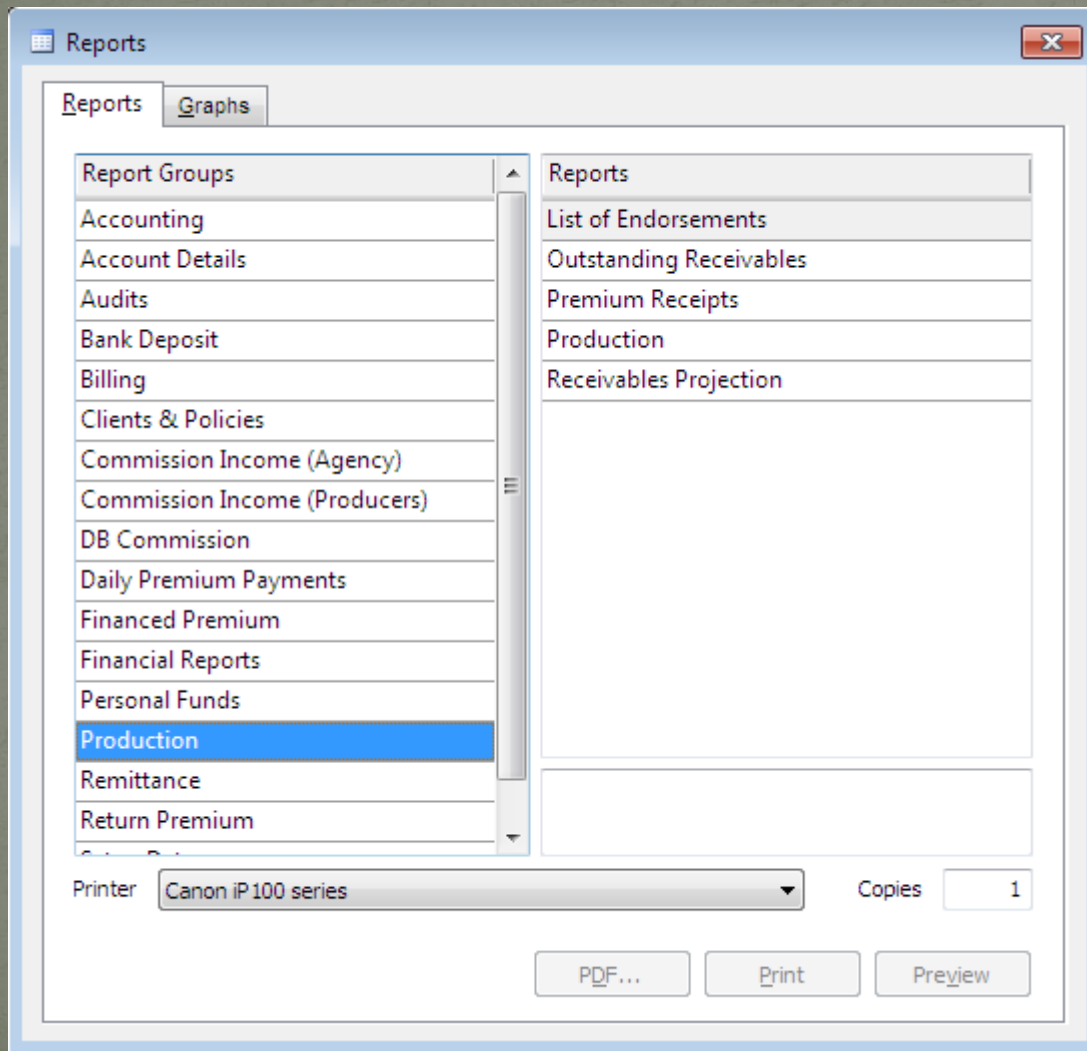
Reporting Personal Funds



Tracking and Reporting Cash Maintained in the Trust Bank Account as:

**Commission Reserve
Private Funds
Interest Earnings**

Reporting Agency Production



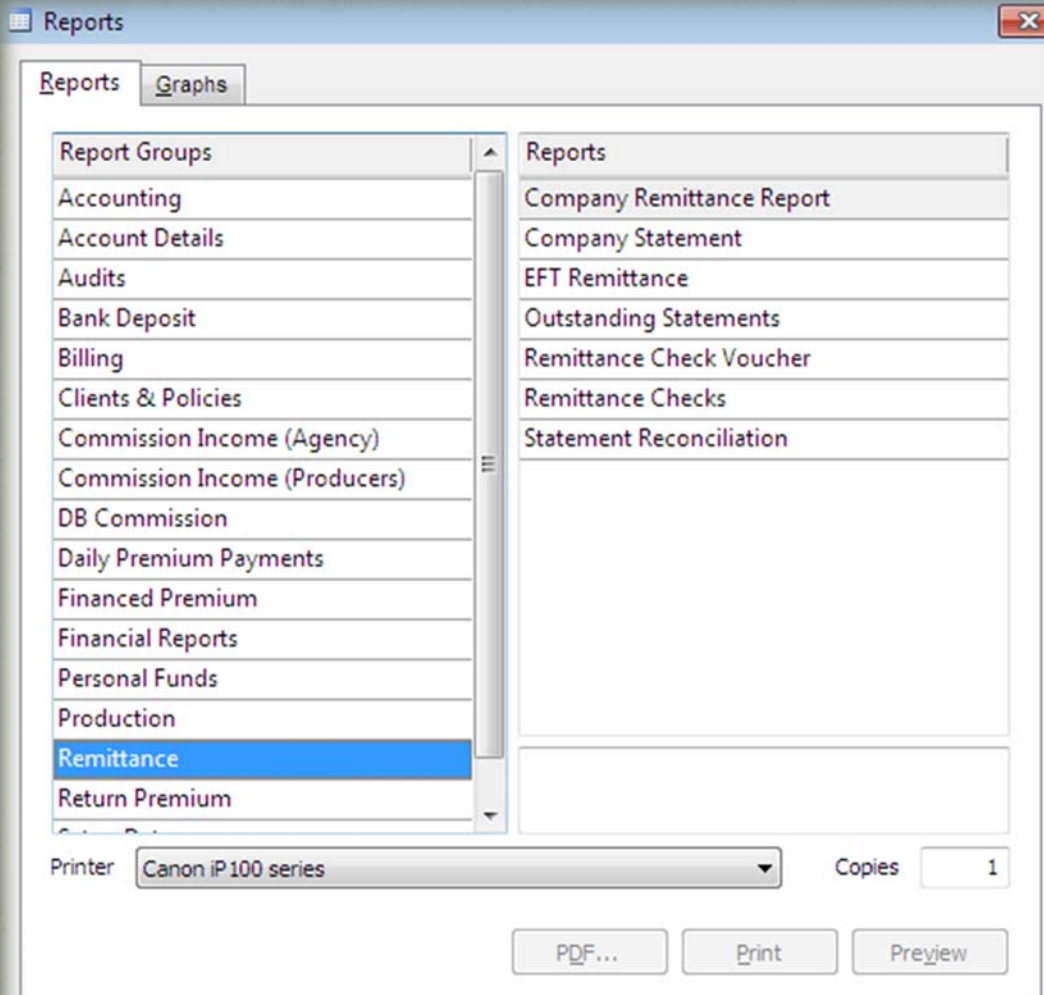
Tracking & Reporting Agency Production by Producers, CSRs, or Companies;

Premiums Received During Past 12 Months ; Projected Premiums & Commissions Over Next 12 Months (Based on Current Sales)

List of Endorsements

Various Data Graphs

Reporting Company Remittance

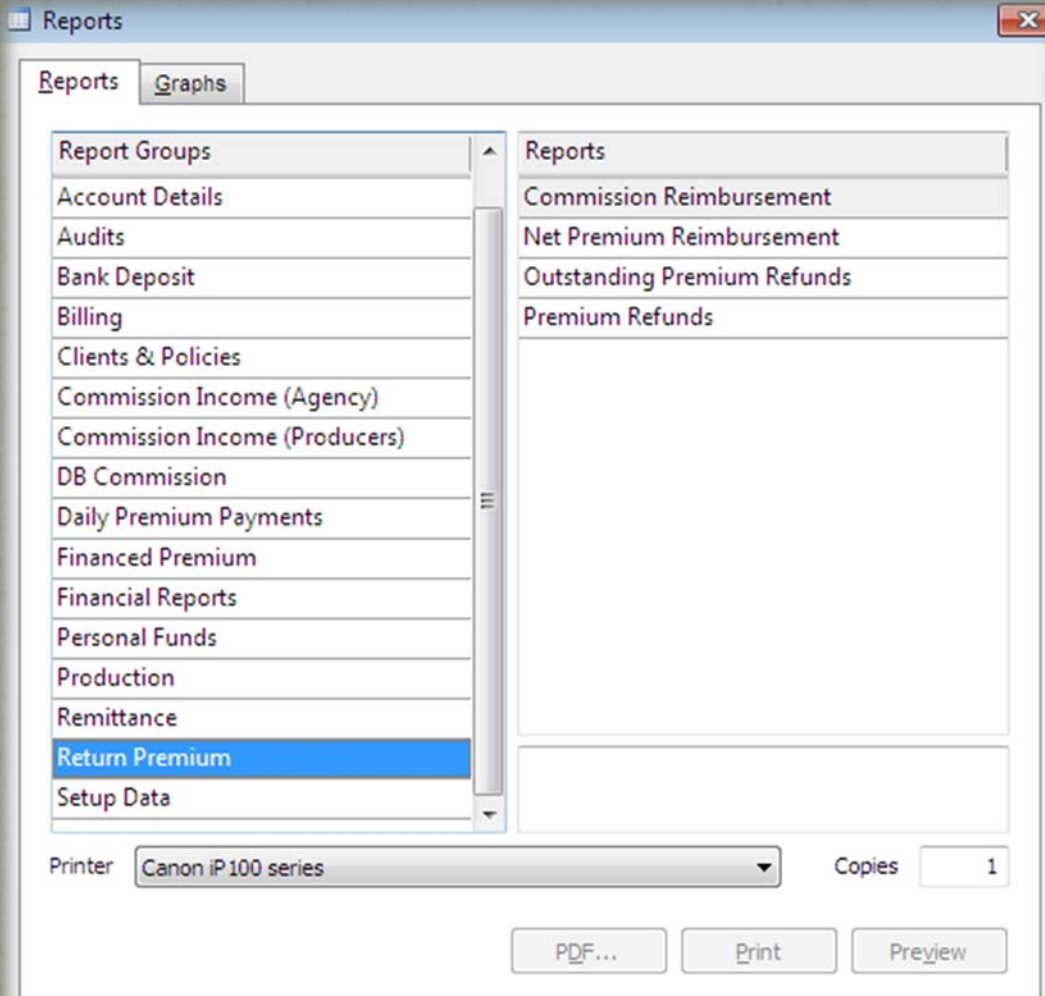


Reporting Company or
General Agents
Remittance;

Copies of Any Company
Statement, Check
Voucher or Remittance
Check.

Outstanding Co
Statements Tracked
and Reported

Reporting Return Premiums



Tracking Outstanding Premium Refunds;

Reporting Status of Return Net Premiums Due from Companies or General Agents ;

Reporting Status of Return Commissions Due from the Agency Operating Account